

Anywhere Door Manual

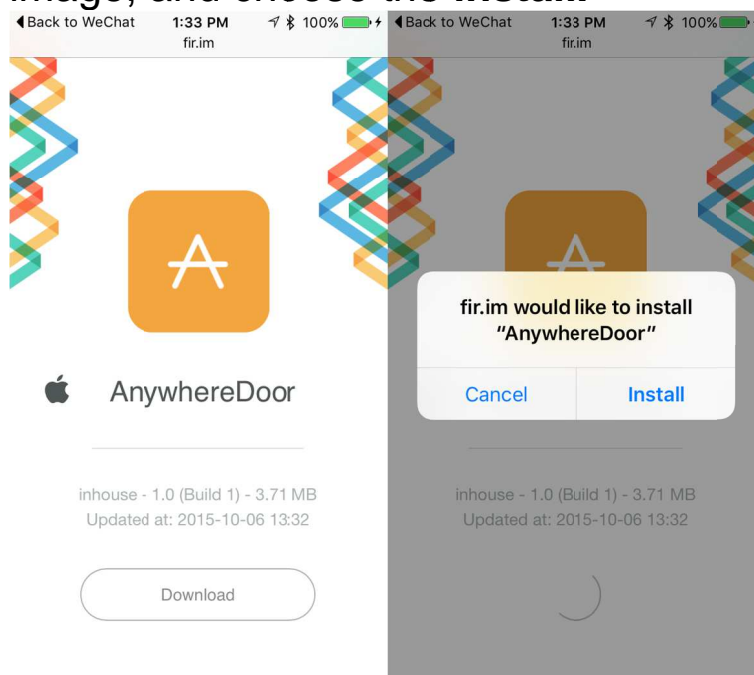
Anywhere Door is a mobile based voice control UC-Win/Road plugin which can be divided into two parts —mobile app part and UC-Win/Road part.

In the next, both parts will be introduced individually.

I. Mobile App

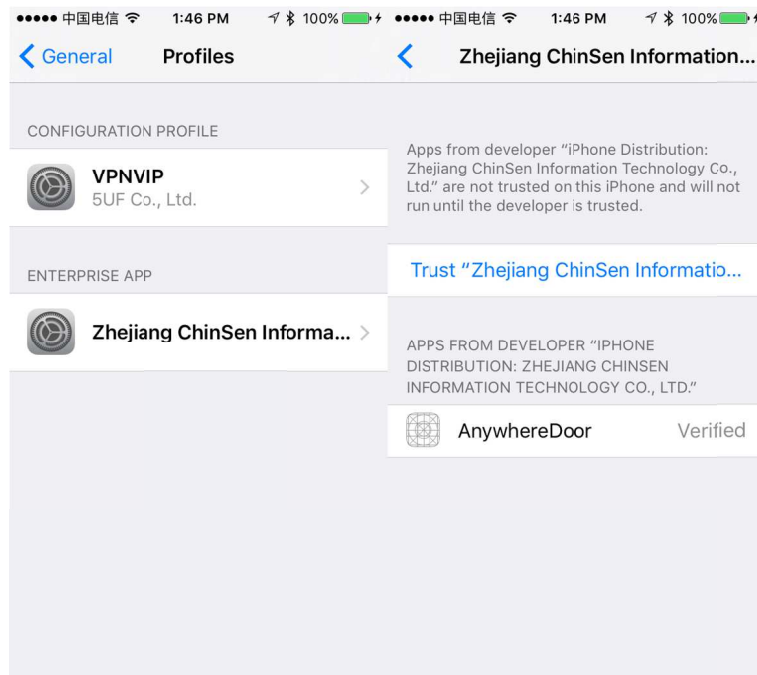
1. Installation

- 1) Use the iOS device visit the website <http://fir.im/ycx3>, and click the **Download** button, an alert will show as the follow image, and choose the **install**.



- 2) If the device is first installing this app, it is needed to trust the developer. (This is because of the apple policy about unofficial app installation.)
Go **Setting -> General -> Profiles**, the following view will be showed. Choose the **Zhejiang ChinSen Informa...**, and

trust it.



2. User Interface

After opening the app, the main interface is showed up. The red button on the screen is the only component you need to manipulate. When you press and hold the button, the recorder starts to work. Meanwhile, you can directly speak to your phone and make requests.

••••• 中国电信 1:23 AM 100% 🔋



3. Command

The commands your phone can understand are as follows:

1) Change Location

When you get to one place, using SAVE AS LOCATION to record current place with a alias for this place. And when you get to another place and want to get back to the previous, you can just call GO SAVED LOCATION command to jump back.

command: SAVE LOCATION: save as + point name

eg: save as pointA.

command: GO TO SAVED LOCATION: go + point name

eg: go pointA.

2) Change Time

You can easily call TIME command to change current time to meet your need. But notice that the time you give to your phone is not arbitrary. Only NOON, EVENING are allowed.

Command: time + time you want

eg: time noon

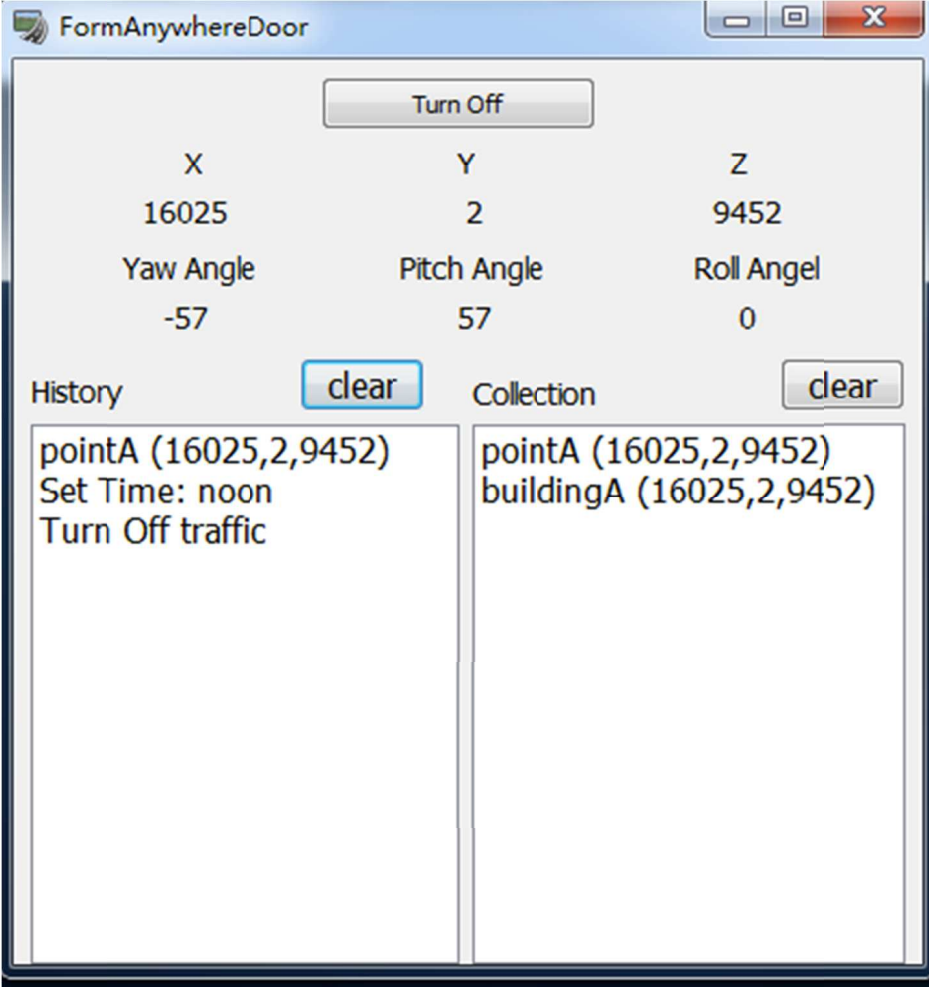
3) Change Traffic Flow

You can also easily open or close traffic flow immediately, which includes cars, people flow.

command: TRAFFIC + on/off

II. UC-Win/Road

You can find our plugin on **Tool -> AnywhereDoor**,
On the interface, you can find your current location's coordinate, and when you gave a command, your command information will present on the list for you. This list will help you a lot when you want to jump back to one point and desire its alias.



The screenshot shows the 'FormAnywhereDoor' window. At the top is a 'Turn Off' button. Below it are three columns of coordinates: X (16025), Y (2), and Z (9452). Underneath these are the angles: Yaw Angle (-57), Pitch Angle (57), and Roll Angel (0). At the bottom, there are two panels: 'History' and 'Collection', each with a 'clear' button. The 'History' panel contains the text: 'pointA (16025,2,9452)', 'Set Time: noon', and 'Turn Off traffic'. The 'Collection' panel contains the text: 'pointA (16025,2,9452)' and 'buildingA (16025,2,9452)'.

X	Y	Z
16025	2	9452

Yaw Angle	Pitch Angle	Roll Angel
-57	57	0

History	Collection
pointA (16025,2,9452) Set Time: noon Turn Off traffic	pointA (16025,2,9452) buildingA (16025,2,9452)